



# St. Swithun & St. Thomas More



A Parish in the North East Hampshire Pastoral Area of the Catholic Diocese of Portsmouth

<b>St. Swithun (SS)</b> Firgrove Road Yateley Hants GU46 6NH <a href="mailto:yateley@portsmouthdiocese.org.uk">yateley@portsmouthdiocese.org.uk</a> <a href="http://www.stswithunsyateley.org.uk">www.stswithunsyateley.org.uk</a>	<b>Parish Office &amp; Enquiries at St. Swithun's</b> Tuesday to Friday 10am to 12 Noon Secretary: Mrs Carole Williams 01252 872732 or 07831 307063 <a href="mailto:yateley@portsmouthdiocese.org.uk">yateley@portsmouthdiocese.org.uk</a>	Charity No. 1199568  <b>Parish Priest</b> <b>Fr Wojciech Paszko</b>	<b>WEEKLY NEWS</b> <i>1st &amp; 2nd Sunday in Lent</i> <b>18th &amp; 25th February 2024</b> <b>Year B</b>	<b>Safeguarding Minister for</b> <b>St Swithun &amp; St Thomas More:</b> <a href="mailto:safeguarding.yat@portsmouthdiocese.org.uk">safeguarding.yat@portsmouthdiocese.org.uk</a>	<b>St. Thomas More (STM)</b> Mildmay Terrace Mount Pleasant Hartley Wintney RG27 8PN <a href="mailto:info@hartleywintney-catholics.org.uk">info@hartleywintney-catholics.org.uk</a>
---	--	--	--	---	--

**Sun 18th First Sunday of Lent**  
*(Missal 183/184)*  
 6pm (Sat) Eileen Crean RIP  
 8.45am (STM) People of the Parish  
 10.45am Winnifred & Walter Sudell RIP

**Tues 20th of the 1st Week of Lent**  
 7pm UCM GE

**Wed 21st of the 1st Week of Lent**  
 9.30am Clare Owens GE  
 10-11am Mothers Prayers  
 10-11am Adoration

**Thu 22nd The Chair of St Peter**  
 9.30am Bride & Martin Reid  
 Wedding Anniversary

**Fri 23rd of the 1st Week of Lent**  
 9.30am Roy Thomson RIP

**Sun 25th Second Sunday of Lent**  
*(Missal 187/188)*  
 6pm (Sat) Maire O'Loan RIP  
 8.45am (STM) People of the Parish  
 10.45am Deceased members of the Glynn family

**Tues 27th of the 2nd Week of Lent**  
 7pm Thomson family GE

**Wed 28th of the 2nd Week of Lent**  
 9.30am Francie O'Neill RIP  
 10-11am Mothers Prayers  
 10-11am Adoration

**Thu 29th of the 2nd Week of Lent**  
 9.30am

**Fri 1st of the 2nd Week of Lent**  
 9.30am Eileen Ross RIP

**L** ENTEN SEASON  
 Lent reminds us of the three-fold Christian discipline of Prayer, Fasting and Almsgiving. What do you intend doing this year? What about the devotional commemoration of Christ carrying the Cross (Stations of the Cross)?



**S** tations of the Cross  
 During Lent Stations of the Cross will be celebrated on Fridays at 10am at St. Swithun's.



**J** esus is waiting to forgive you!  
 A PENITENTIAL service will be held on the 12th March at 7pm, at St Swithun's.



**LECTIO DIVINA**  
 Will take place on Thursdays, 7pm, Parish Centre, Yateley.

**COFFEE MORNINGS**  
 Every Sunday after 10.45am  
 Mass at St Swithun's. Please join us.



**UCM**  
 20/02: Mass at 7pm for UCM intention followed by AGM.




**WOMEN'S WORLD DAY OF PRAYER**  
 Friday 1st March at 11am. The Women's World Day of Prayer will be celebrated at St St Swithun's Yateley. This year, our global ecumenical movement will pray a liturgy developed by our sisters from WDP Palestine. World Day of Prayer has a strong and vibrant history in the Middle East,



especially in Palestine. Women from various denominations in Palestine have faithfully prayed together every year for decades.

**MEDJUGORJE HOLY HOUR**  
 The Medjugorje Holy Hour will restart at St Swithun's on Thursday 7th March after the morning Mass. It is being offered for Peace in our World. Everyone is welcome to join us.

**SECOND COLLECTION**   
 There will be a second collection on Sunday 25th Feb. Please support the CAFOD Lent fast day by returning the envelopes from the porch with a donation for this good cause. Help hardworking people like the fishermen get home safely and feed their families.

**A DAY OF RECOLLECTION**  
 The Union of Catholic Mothers invite you to a day of recollection on Saturday 2 March at Corpus Christi Church in Wokingham. It will be led by Fr. Liam Cummins MHM and starts at 10am. The cost is £10 per person and will include a simple buffet lunch plus coffee and tea. Please see the poster in the church porches for more information. Please email Marie Tomlin at: [mvc.tomlin@btinternet.com](mailto:mvc.tomlin@btinternet.com) if you would like to attend so that they have numbers for catering.



**ADORE**  
 A spiritual mini-retreat 24th February 10.00-1.00 "I have chosen you - trusting God's promises." Including Mass, Adoration, Praise, Prayer for the gifts of the Holy Spirit

and inspiring guest speaker Mary Hirst. Please register for the Zoom meeting in advance at [bit.ly/ADOREFEB2024](https://bit.ly/ADOREFEB2024) More information at [www.altonrenewal.com](http://www.altonrenewal.com)

**YATELEY CHORAL CONCERT**  
 Concert in St Swithun's Sat 16th March 7.45pm.  
 Mozart – Coronation Mass, also Purcell, Elgar, Bruckner, Haydn. Tickets on sale soon."



**FUTURE EVENT-PARISH PICNIC**  
 Sunday 19th May, after 10.45am Mass, we will have a parish picnic and also celebrate Father Wojciech 30th Anniversary of priesthood. Please note the date in your diary.

**CRAFT EXHIBITION**  
 Cathedral Church of St Michael & St George Queen's Avenue Aldershot GU11 2BY  
 Sat 24th Feb 11am – 4pm & Sun 25th February 12 Noon – 1.30pm. In aid of Phyllis Tuckwell hospice.

**STOP ABORTION**  
 Oppose the latest extreme abortion Amendments. There is a concerted effort to extend abortion laws and remove all protection from unborn babies. Abortion providers, activists and MPs are attempting to use the cases of women being prosecuted for illegal late term abortions – a direct result of their reckless pills by post policy – to decriminalise abortion entirely. It is now very important that MPs are flooded with letters ahead of any vote at Report stage. You can also pick up a card from the porch and send it to your MP.



## MESSAGE FROM BISHOP PHILIP

As King Charles is beginning a series of treatments for cancer impels us to commend him to the Lord, asking for God's blessing on the oncologists, nurses and medical staff who are caring for him and also for a successful outcome. May the Lord Jesus give him strength, courage and patience. Many people have battles with cancer in its many forms at various times in their lives, perhaps people we know in our families and parishes, maybe even you who are reading this. As we pray for King Charles, let us also pray for all who are sick, especially those who are very ill and in hospital at this time, and for the healing of the sick.



Have you signed up for our forthcoming Symposium? The Diocese has organised an exciting Symposium called What does it Mean to be Human? - a discussion day on medical and health-care ethics. It takes place at The Arc (formerly The Discovery Centre) in Winchester (opposite St. Peter's Catholic Church) on **Saturday 16th March 2024 from 10.00am until 4.15pm**. Start of life and end of life questions are always in the news these days, together with issues to do with gender and mental health. All these raise the deeper question about what it means to be a human person. The Symposium features presentations from well-known experts, led by the popular motivational speaker and presenter, David Wells. It is open to people of all faiths and none and there will be something here not just for specialists but for students and anyone with an interest in medical and social care. The aim is to bring the Catholic Tradition and its values into a constructive and fruitful dialogue with people of other viewpoints. Tickets cost £20, including sandwich lunch and refreshments, and are available on-line [via Eventbrite here](#).



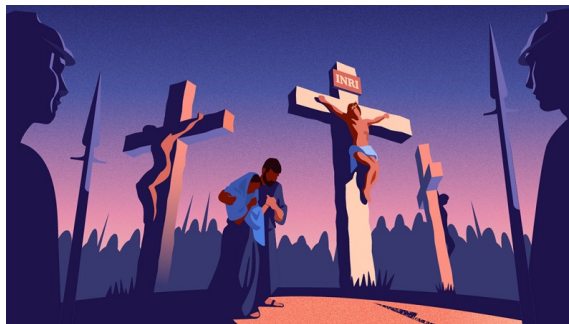
## What is Lent?

Lent is a significant period for many Christians worldwide, especially those within the Anglican, Catholic, and Orthodox traditions. It lasts for six weeks and prepares people for the celebration of Easter, in a similar way that Advent leads up to Christmas.

Although Advent is a time of celebration and eager anticipation, Lent is typically observed with solemnity and preparation for commemorating Jesus' death and resurrection at Easter. From Ash Wednesday until Easter Sunday, it has been customary to fast or abstain from something. Much like how we prepare for significant events in our personal lives, such as weddings or birthdays, Lent calls for us to ready our minds and hearts to remember the life, death, and resurrection of Jesus.



Lent calls for us to ready our minds and hearts to remember the life, death, and resurrection of Jesus.



## YOUR OFFERTORY MONEY

Your Offering to the Parish is very important to us, and we thank everyone who are supporting the parish. We ask you to consider setting up a Standing Order, or do an online Bank Transfer.

## PARISH BANK ACCOUNT NAME

**CDP YATELEY ST SWITHUN**

Account: 00892220, sort code 30-93-04

## CDP HARTLEY WINTNEY STM

Account: 01785711, sort code 30-93-04

Please put your surname 'offertory' in the transaction reference text so we can identify the purpose of the donation.

**If you are a UK taxpayer please consider joining our Gift Aid Scheme. Forms are available in the porch or the Parish Office.**

## PRAYERS FOR THE SICK:

Anne Wardle, Pat Howell, Pauline Doyle, Tim Driscoll, Rose O'Halloran, Peggy Fennel, Jean Warner, John Harris, Bob Fernandez.

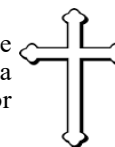
## FAITHFUL DEPARTED

We remember at this special time of year, our loved ones who have died. May the light of God's love shine eternally upon them.



## ST. SWITHUN'S 100 CLUB

Names of winners are displayed in the porch. If you would like to become a member contact the parish. office or speak to Graham Massey.



## FIRST COLLECTION:

4/02: SS: £116.50 STM: £101.30

11/02: SS:£116; STM:£79.10

## SECOND COLLECTIONS:

25/02: Cafod

**Many thanks for all your contributions**

## HART FOODBANK

Toilet Rolls  
Rice Pudding  
Custard  
Jam  
Tinned Pudding



Tinned Pudding  
Instant Mash  
Tinned Potatoes  
Instant Mash  
Tinned Potatoes